



Co-funded by
the European Union

Rail Baltica project in Latvia

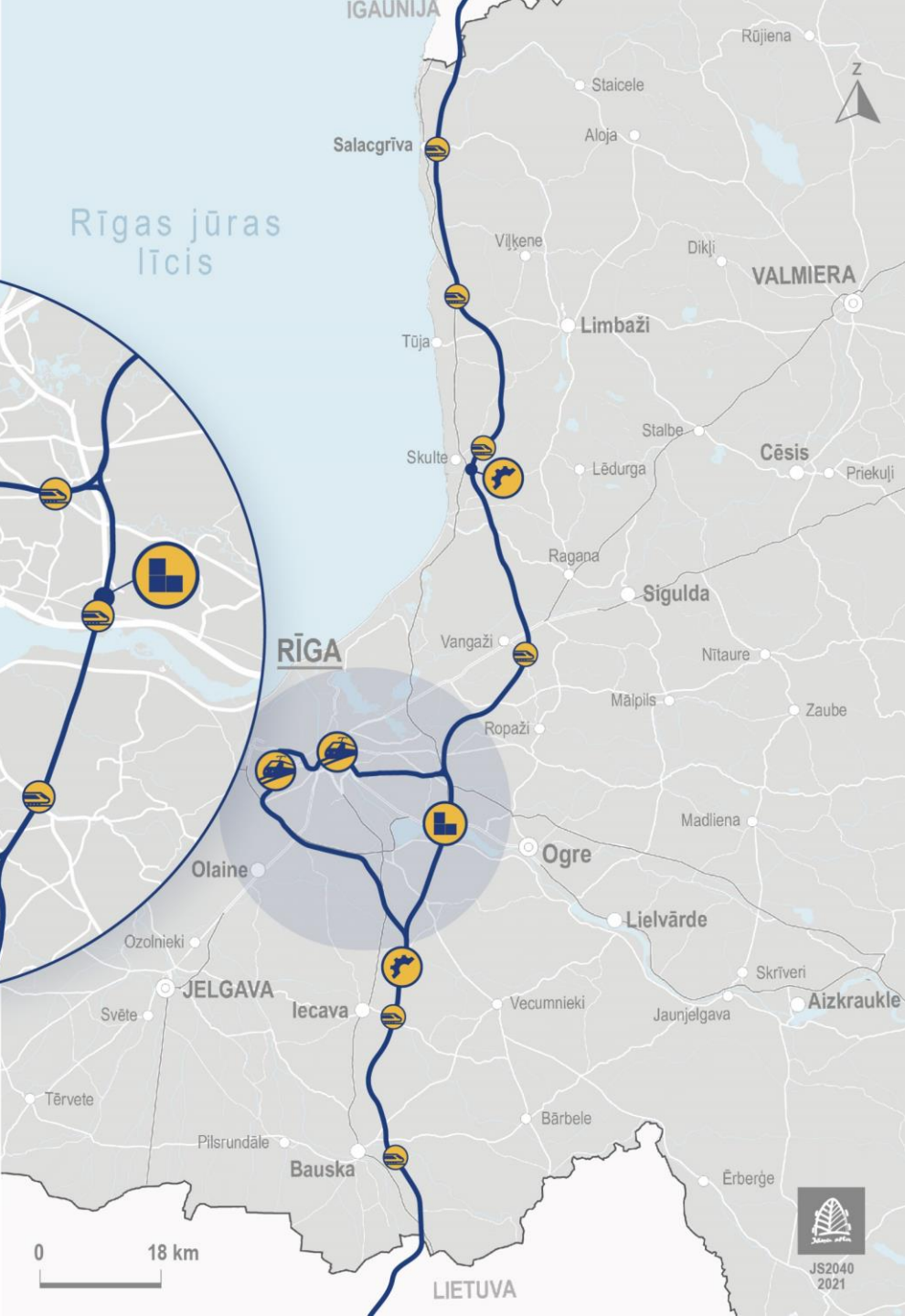
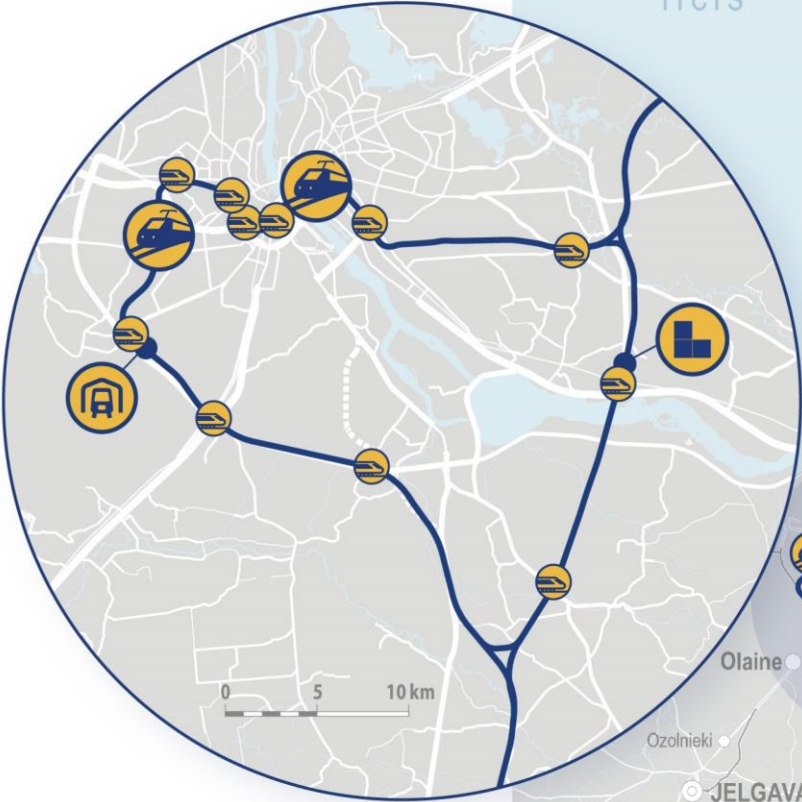
Ēriks Diļevs, Chairman of the Management Board at Eiropas Dzelzceļa līnijas

#RailBaltica

Rail Baltica main line and infrastructure objects in Latvia

Infrastructure objects:

-  Rail Baltica international stations
-  Rail Baltica regional stations
-  Infrastructure maintenance facilities
-  Rolling stock depot
-  Intermodal freight terminal



Project implementation progress in Latvia




Rīga
RIX



- Construction works ongoing in Rail Baltica Riga-Central Station section and RIX Riga Airport section
- Ongoing design for intermodal freight terminal in Salaspils
- Design of 2 infrastructure maintenance facilities in progress
- Large scale mainline (220km) construction starting (first works outside Riga)
- **Land acquisition:** 15% of the land units necessary for the construction of Rail Baltica, have been acquired, 31% in progress to be acquired (overall more than 100 km).
- Development of the railway infrastructure management model

Ongoing construction works:

Riga Central Station Hub

- Architecture - PLH Arkitekter & COWI (Denmark), 2017
- Design and construction – BERERIX (BESIX (Belgium), RERE Būve (Latvia), Rizzani de Eccher (Italy), 2019
- FIDIC/Supervision – EGIS Rail, Egis Batiments International/DB Engineering & Consulting (France, Germany), 2019

Benefits

- More than 400M EUR investment in Riga center
- New high-speed connection and regional connectivity
- Enhanced safety and access solutions
- Reconstruction of existing tunnels and platforms
- New street network
- Contemporary landscaping solutions
- New bridge across the river



Construction of Rail Baltica Central Station Hub



Ongoing construction works:

Rail Baltica station at Riga International airport

- Design – PROSIV (Prodex (Slovakia), Sintagma (Italy), Vektors T (Latvia), 2020
- Construction – B.S.L. Infra (Swietelsky AG (Austria), SIA Binders, AS LNK Industries (Latvia), 2021
- FIDIC/Supervision – Prointec S.A.U (Spain), Forma2 (Latvia), 2021

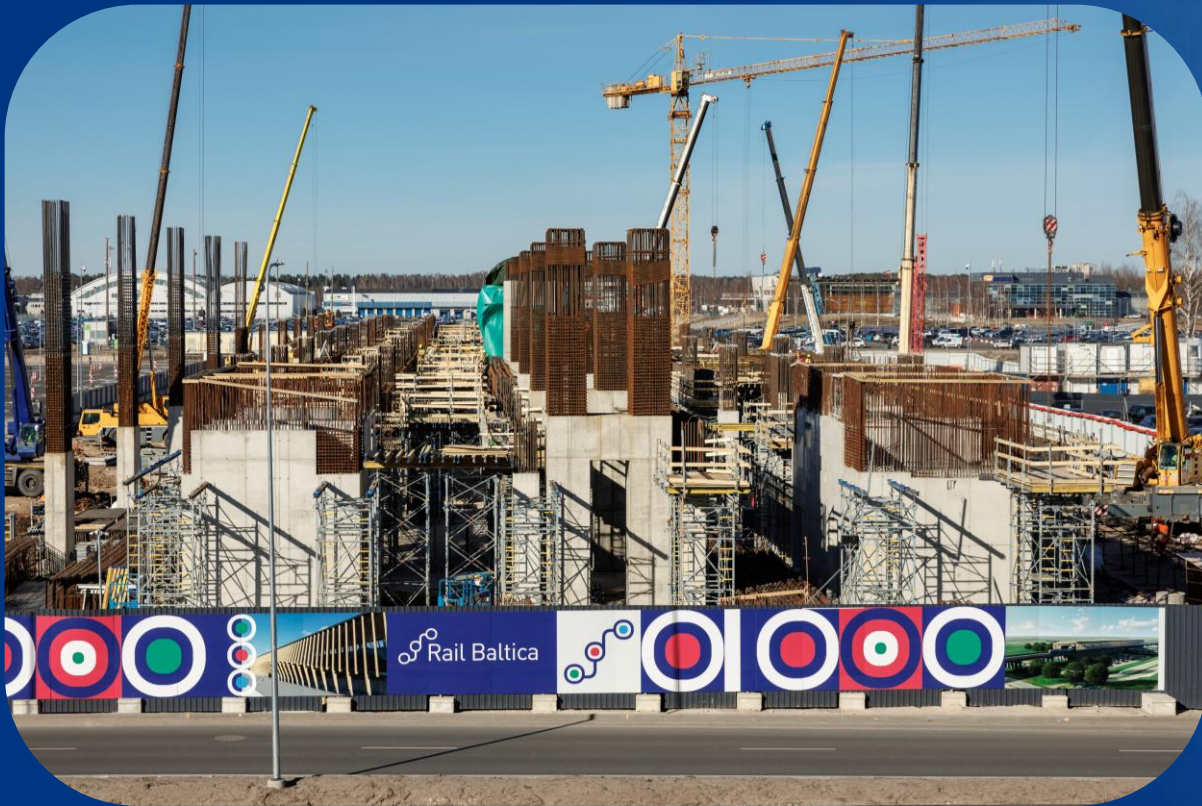


Benefits

- Ensures connection between Riga Central and Baltics biggest air traffic hub
- Reconstruction of airport related areas
- Enhanced safety and access solutions
- Air-to-rail service
- Contemporary landscaping solutions



Rail Baltica station at RIX Riga Airport



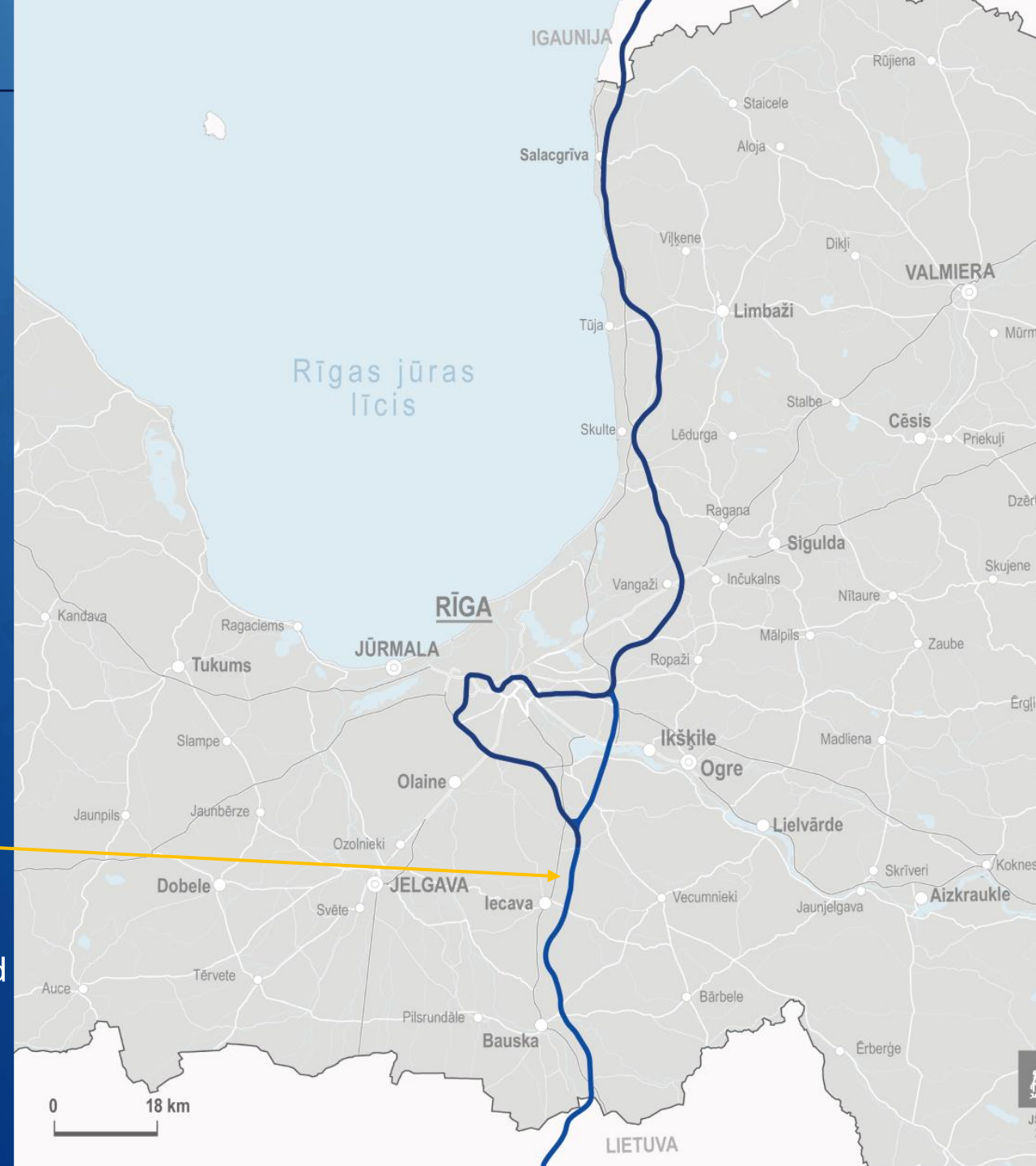
Ongoing construction works:

Rail Baltica mainline

- Approx 220km
- Construction by joint venture E.R.B. Rail JV PS, which includes Eiffage Génie Civil SAS, Budimex S.A. and Rizzani de Eccher S.p.A (France, Poland, Italy)
- Supervision - Italferr (Ferrovie dello Stato Italiane Group)

Strategy

- First works in Southern section of mainline
- Starting with establishing construction base near Iecava
- Deforestation taking place, construction works to be started this season
- Crossing of Riga city and borderline sections will be included in separate procurements



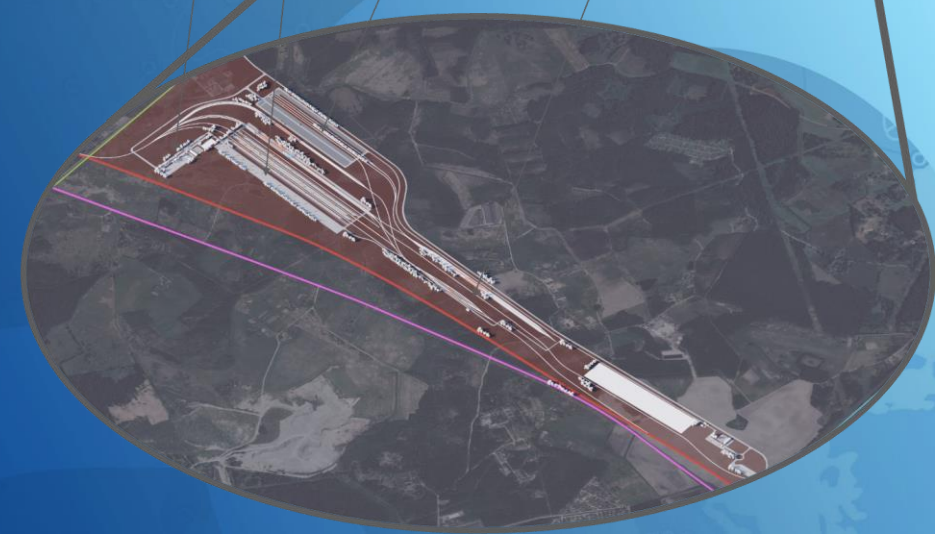
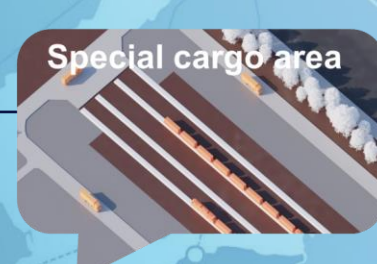
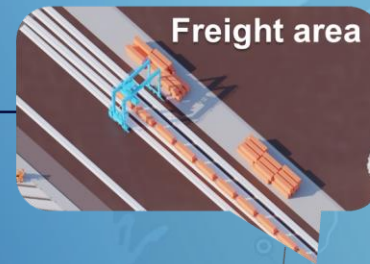
Ongoing design works:

Salaspils Intermodal Freight terminal

- Annual capacity: 120 – 200K TEU/year
- Connections: Rail connection between 1435 and 1520 lines, road - via Baltica route
- Train length: max 1050m
- Riga port connection distance: ~30 km/1 hour
- Area: ~ 150ha of multi-modal freight handling services
- Equipment: RMG, Reachstackers, Shunting locomotives

General services

- Container cargo handling
- Bulk cargo handling
- Rail to Rail cargo transshipment between 1435mm/1520mm
- Piggy-back, incl. ROLA cargo handling
- Potential for High speed freight train distribution
- Container park and container repair
- Potential rail connections to warehouse areas
- Modern automated electronic access control
- Equipment maintenance
- Shunting operations



Ongoing design works:

Infrastructure maintenance facilities

- Design – Sintagma (Italy), BRD Projekts (Latvia), 2021
- Design to be ready in 2023/2024
- Located in Iecava and Skulte

Benefits

- Storage of materials during mainline construction (first BP outside Riga)
- Base for infrastructure maintenance mechanisms and materials in the future



Planned and announced procurements 2024

Procurement title	Category	Indicative start date	Status
Land acquisition services for determining the market value of real estate and determining the real estate market rent for the implementation of the Rail Baltica project	Services	2024 Q2	Announced
Land development planning, cadastral surveying and boundary establishment works for real estate related to the implementation of the Rail Baltica project	Services	2024 Q4	To be announced
Research of required and planned competencies of Rail Baltica	Services	2024 Q2	Announced
Integration of Rail Baltica regional stations into the public transport network	Services	2024 Q2	To be announced



Co-funded by
the European Union

Thank you!

www.railbaltica.org